



**40<sup>th</sup> Anniversary**  
**Annual Report**

**Child Focus, Inc.**  
2017 Annual Report to the Community  
Fortieth Anniversary Edition  
1977-2017

**Child Focus, Inc.**  
**Making THE Difference!**  
[www.child-focus.org](http://www.child-focus.org)



## Board of Directors

**Rob Meyer, President**

American Modern Insurance Group

**Tim Beechuk, Vice President**

Retired Procter & Gamble

**Keith Kral, Treasurer**

Peoples Bank

**Marwah Badawi, Secretary**

Parent

**Ben Yoder**

Frost Brown Todd, LLC

**Margaret Krueger**

Retired, Goshen Local School District

**Jim Nuckols**

American Financial Corporation

**Brooke Mantanguihan**

Parent

**Joe Wagner**

Park National Bank

**Laura Kramer**

Total Quality Logistics

**Matt Earley**

Williamsburg Local School District

**Tiffany Jackson**

Parent

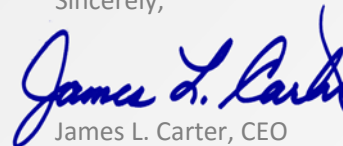
## A Letter from Our CEO

While Child Focus continued its path of steady and measured growth of 8.3% over the past year, 2017 was truly remarkable in that we also reached a milestone – our 40<sup>th</sup> anniversary. In that span of time Child Focus has grown more than any of us could have ever imagined. Just 40 years ago, Clermont County Center for Developmental Disabilities, Inc. (our original name) consisted of a handful of employees serving a small group of individuals. Today, Child Focus is a leading provider of early learning, behavioral health and foster care services in southern Ohio, operating in hundreds of homes and 80 schools, pediatric, juvenile court and office sites. We are currently the eighteenth largest employer in Clermont County, with 318 employees, 56 foster parents, 1,137 volunteers and an operating budget of \$17.5 million.

All that Child Focus has accomplished is due to the initial grassroots efforts of improving the lives of children, families and adults— a mission that remains to this day. For the past 40 years I have been fortunate to serve this organization alongside a talented group of dedicated staff, foster parents, volunteers and board members, all of whom share our goal to provide quality services and programs that promote school readiness and success, provide safe and healthy homes, foster independence, and help remove barriers for individuals and their families. I am eternally grateful for their passionate dedication and leadership.

On the pages of this 40<sup>th</sup> anniversary annual report, we take a look back at our humble beginnings and reflect upon our accomplishments of this past year. It truly is a remarkable time to lead this great organization. As always, many thanks for your continued support and participation in this wonderful journey.

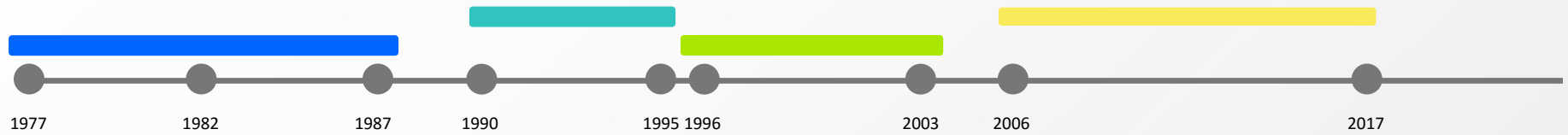
Sincerely,



James L. Carter, CEO

# Agency

# Timeline & Milestones



## 1977-1987

**1977:** Incorporated as the Clermont County Diagnostic Center with a budget of \$195,008. **1982:** Awarded Head Start & Mental Health contracts. **1984:** Crisis Response Team added. **1987:** Home Visitor and Early Childhood Enrichment Center started.

## 1990-1995

**1990:** Therapeutic Foster Care begins. **1991:** Emergency Team to prevent hospitalization forms. **1993:** Celebrating Families and Early Head Start programs developed. **1994:** Even Start Adult GED and Juvenile Court Intensive Home-Based programs begin. **1995:** Child Care services start.

## 1996-2003

**1996:** Wasserman Youth & Adolescent Center, a partial hospitalization program, opens. **1998:** Genesis School, a separate learning facility for suspended or expelled students, opens. **2000:** Mental Health in the regular education school setting starts. **2001:** Independent Living & Life Skills curriculum is developed to support emancipating foster youth. **2003:** Clermont County Crisis Hotline takes its first call.

## 2006-2017

**2006:** Therapeutic preschool for birth to five started. **2010:** Hayden Foundation supports Forest Park School mental health services. **2011:** Telepsychiatry services begin. **2012:** Signs of Suicide (SOS) program started in schools. **2013:** Early Childhood Mental Health expands to 6 counties. **2014:** Before & After School begins. **2015:** Birth to five program added to Wasserman Center. **2016:** Opened new Mt. Orab and Norwood mental health offices.



## Milestones

### 1982

Clermont Co. Commissioners bid Head Start to non-county contractors. The Diagnostic Center, now Child Focus, submitted a competitive grant to Region V in Chicago and was awarded the Head Start program from the Dept. of Health & Human Services and Dept. of Education. The first year of Head Start served 150 children and today we serve 769.

That same pivotal year, the counseling program was added to the Children's Treatment Center, further diversifying this once single-purpose agency.

### 1990

Child Focus begins providing Therapeutic Foster Care to focus on providing supportive homes for children with significant behavior needs and a history of significant trauma.

### 1996

Wasserman Youth & Adolescent Center, a partial hospitalization program for severely emotionally disturbed children opened. This intensive therapeutic program accepted referrals from schools and community partners and provided students with educational and therapeutic opportunities to maintain their education while receiving mental health treatment and supportive services.

### 2000

Child Focus begins providing individual and group counseling in the regular education environment. Providing mental health in the schools was a critical turning point for accessibility, providing this service where students and teachers needed it most- in the community.

### 2010

Head Start expands services and specialized programs including the two-way immersion Bilingual Preschool Program for Spanish speaking families and Summer Bridge, a home-based individualized summer program for children with low assessment scores.

### Counties served:

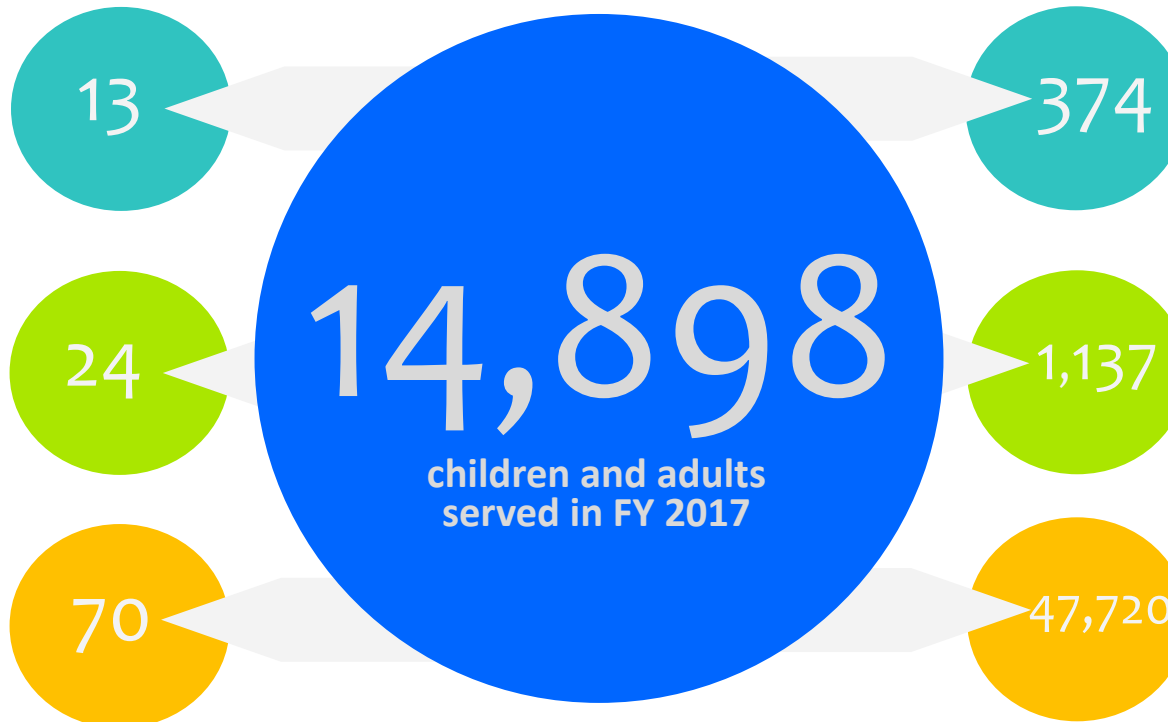
Child Focus, Inc.'s 2017 service area includes Adams, Brown, Boone, Butler, Clermont, Clinton, Franklin, Greene, Hamilton, Highland, Kenton, Montgomery and Warren Counties.

### Preschools/Before & After School programs:

17 preschool centers served 769 children birth to five and 7 before and after school programs served 323 children kindergarten through grade 5.

### Schools served:

Over 40,000 students had access to mental health services in their school building in FY 2017. For a list of schools, click here: [http://www.child-focus.org/media/bhforms/Flyer\\_CMH\\_Schools\\_17-18.pdf](http://www.child-focus.org/media/bhforms/Flyer_CMH_Schools_17-18.pdf)



### Staff & Foster Parents

As the 18th largest employer in Clermont County, our 318 staff and 56 foster parents helped provide services to almost 15,000 individuals.

### Volunteers:

Child Focus utilized 1,137 volunteers to help in our programs and events and to provide support and leadership in our Policy Council and Board of Directors.

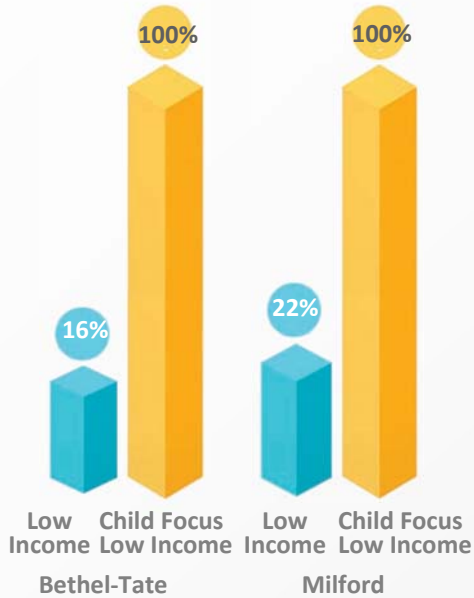
### Volunteer hours:

1,137 volunteers provided 47,720 hours of service to Child Focus, Inc. resulting in \$732,993 of donated services and in-kind.

# Early Learning

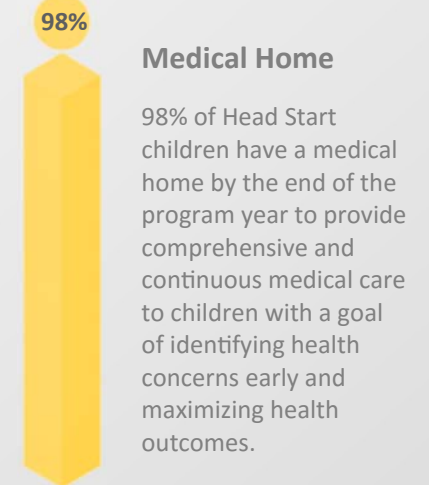
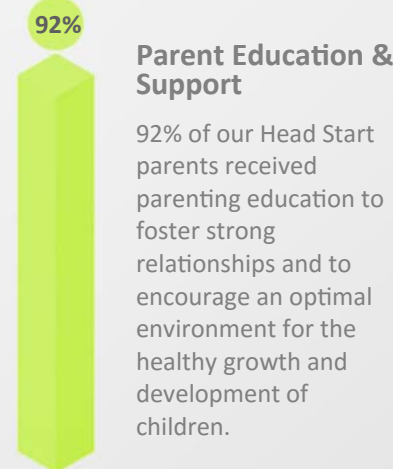
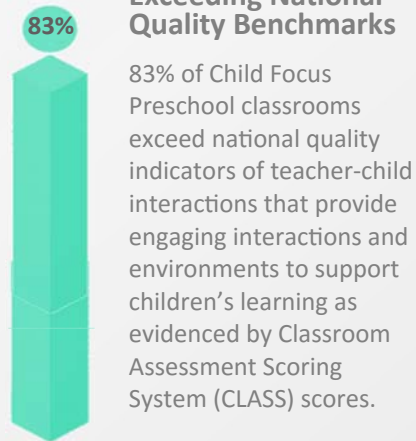
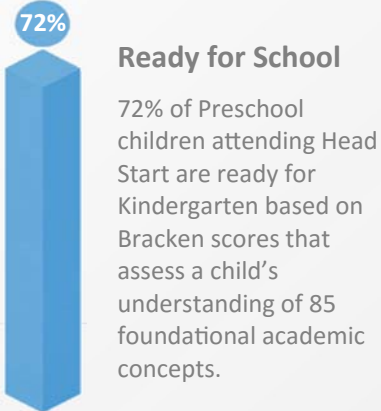
# Closing the Achievement Gap in School Readiness

## 2017 Kindergarten Readiness Assessment (KRA) Scores



All children entering Ohio public kindergarten programs are assessed with the Kindergarten Readiness Assessment (KRA ) to identify their levels of early literacy skill development in areas important to reading development and future literacy success. **As you can see in the graph, 78%-84% of low income children are not ready for Kindergarten.** This graph and research shows that by the time children begin kindergarten, significant differences already exist between those from high/middle and low income families. These differences are referred to as “the achievement gap.”

Studies indicate that children living in poverty can enter Kindergarten with readiness assessment scores 60% below their peers with no risk factors. With the support of the Child Focus Head Start program, Clermont County’s most at-risk population of children were able to earn higher average Kindergarten readiness scores than their more privileged peers. **Child Focus low income children, are statistically at risk for struggling educationally, yet when they leave our programs are achieving readiness scores that predict future school success at or above their peers with no income risk factors.** Get the full report here: <http://www.child-focus.org/media/ecforms/2018 HS Community Assessment.pdf>







74%

## Increase in Protective Factors (PF)

At referral for Early Childhood Mental Health services, average PF scores fell into area of concern. Upon discharge, children increased their PF scores an average of 6 points, moving children into the typical range.



86%

## Symptom & Functioning Improvement

86% of persons served in FY 2016 reported symptom and functioning improvement. This self report measures symptom difficulty individually in the home, school and community. These results show improvement in all three domains.



93%

## Decrease in Hard Drug Use

At the end of treatment, 93% of youth served in the Multi Dimensional Family Therapy (MDFT) Juvenile Court program were using no hard drugs after completion of treatment and drug testing.



97%

## Satisfaction with Mental Health Services

Persons were surveyed during active treatment on level of satisfaction with services provided. The outcome data reflects 97% of the population served was satisfied with Mental Health services.

## 100% of Children are Safe from Abuse & Neglect

Child Focus continues to be exemplary in matching children with well-qualified, licensed foster parents and in providing supportive services in order to sustain these placements.

## 100% of Children Met School Attendance Guidelines and 95% Evidenced Passing Grades

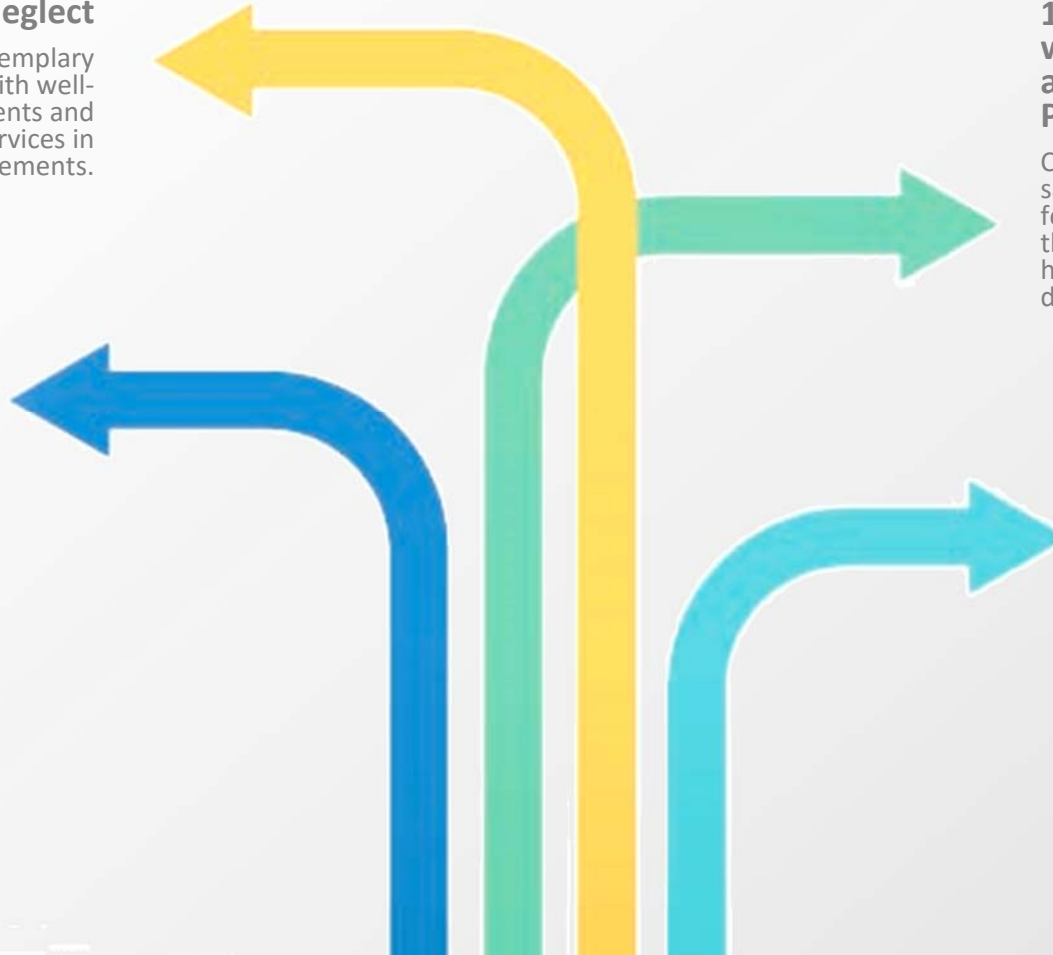
Foster parents value education and advocate for the needs of the children in their care. Their education is also supported by tutoring and case management with schools and teachers.

## 100% of Children are Satisfied with Their Foster Placement and Supportive Services Provided

Child Focus continues to yield high satisfaction results from foster children feeling cared for and well-treated in the home, liking their foster parents, having their needs met, fun things to do and feeling safe.

## 100% of Youth Evidence Improvement Between Pre & Post Testing in One or More Area of Self-Sufficiency

Child Focus, Inc. offers comprehensive Life Skills training for youth and young adults ages 15 and older. Curriculum includes Choices, Education & Career Planning, Personal Finance, Self-Sufficiency, Self-Care and Personal Relationships.





# Financials

## Statement of Activities for Year Ended June 30, 2017

### Support:

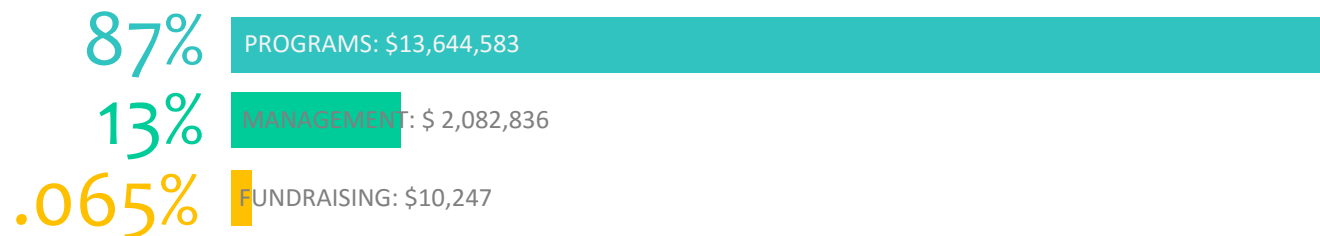
Federal Grants	3,279,244
State Subsidies	1,738,952
Title XIX and Other Federal Funds	3,985,702
School District Contracts	860,404
Therapeutic Foster Care Funds	838,299
Early Head Start	1,332,596
In-kind Program Revenue	419,417
United Way and Other	270,081
Contributions	634,143
	<hr/>
	13,358,838

### Revenue:

Day Care Funds	652,676
Fees:	
Self-Pay	128,701
Agency	67,421
Miscellaneous Income	69,472
Special Events Less Exp. (11,925)	30,151
Child/Adult Food Care	273,815
Home based Intervention	369,093
Training	43,996
Insurance Fees	336,853
Rental Income	141,925
Investment Income	59,590
Realized/Unrealized Gain on Investment	241,545
Gain on Sale of Property and Equipment	3,100
Release from Restrictions	---
	<hr/>
Total Support and Revenue:	15,774,076

### Expenses:

Program Services	13,644,583
Management and General	2,082,836
Fundraising	10,247
	<hr/>
Total Expenses:	15,737,666
Change in Net Assets	36,410
Net Assets, Beginning of Year	6,626,264
Net Assets, End of Year	6,662,674



# Quotes

## Children, Parents, Caregivers, Community

*Knowing her teacher is always there when I need her for something is the nicest thing, with lots of advice, goals, resources and outings in the community.*

*Very child centered! Caring and focused!*

*It's great how you and your child will learn to grow in many ways. Your child will meet so many goals while learning for school.*

*I appreciate that you care about these kids and our wellbeing. It feels as if no one else does.*

*She enjoys each week that her home visitor comes to our home. She's very young, so it is not easy for her to communicate, but the smile she gets on her face and how she interacts with her speaks volumes.*

*I like everything. Everyone has been supportive and flexible. I would not have thought it would be possible for my son to return to his home school.*

*I really love coming here. It's helped me decrease the "I hate myself" thoughts and really improved my self-esteem.*

*Our worker has done more for my family through this process than anyone else. We love her!*

*It touches me deeply that all of you genuinely care for these children. As a grandmother, it means everything to me.*

*She provides valuable assistance to the inmates, especially those who have special needs. She is never too busy to go that "extra" step to assist us.*

*She helped me gain confidence with my parenting.*

*I can honestly say this experience has changed my family's life in a lot of positive ways.*

*I couldn't have done this without you guys. You guys have made such a difference.*

*I receive consistent and personalized care, specific to my child's needs as they change.*

*My provider has been an anchor for my children in tough times.*

*Therapy for my child has changed MY life. My daughter is now involved in school activities, has friends and has no unreasonable fears.*

*My therapist always listens and doesn't judge me for the things I struggle with.*

*It has been so beneficial to help accomplish what we need to survive.*





The Mission of Child Focus, Inc. is to join with communities in strengthening the quality of life for children, families and adults.

**Child Focus, Inc.**  
**Making THE Difference!**  
[www.child-focus.org](http://www.child-focus.org)

